

INTERIOR CONTAINERS

pages 5-19



South Pacific Baja and Redondo

Whether your needs call for fiberglass, plastic or metal, Primescape meets your interior needs with a large selection of quality containers.

The next fifteen pages showcase the most beautiful indoor pots in the industry. If you see something you like, call us for a price quote. Our courteous sales professionals are always eager to help answer your questions.



Beijing in Vintage Gold

FIBERGLASS

SHIPS IN
24
hrs

800-872-4361
www.primescapeproducts.com

MANUFACTURER'S
6
month
LIMITED WARRANTY



Real Mexican Fiberglass!



South Pacific Baja

Item	Grow Pot	Outside Width	Inside Width	Height
SPB08	8"	10"	9"	11"
SPB10	10"	13.75"	12"	15"
SPB14	12/14"	17.75"	15"	19"

South Pacific Redondo

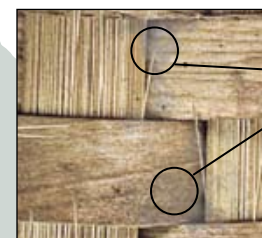
Item	Grow Pot	Outside Width	Inside Width	Bottom Width	Height
SPR10	8/10"	12.5"	11"	8"	23"
SPR14	12/14"	16"	15"	11"	31"
SPR17	17"	19"	18.5"	16"	38.5"

South Pacific Alta

Item	Grow Pot	Outside Width	Inside Width	Bottom Width	Height
SPA10	8/10"	11.5"	10.5"	7.5"	24"
SPA14	12/14"	15"	14"	11"	33.5"
SPA17	17"	19.5"	19"	15"	40"



Why not just use real wicker?



Real wicker starts out lovely, but will inevitably splinter and fade. Its recesses will also collect dust that is very difficult to remove. Primescape's South Pacific series has no gaps because the "weave" is simulated. Dust is repelled from the South Pacific's semi-gloss finish, and the color won't fade.

NOTE: A complex, dual-layer painting process is responsible for the South Pacific's natural look. As a result, the containers may vary slightly in hue and saturation (just like the visual properties of real wicker).